

OLYMPUS LOCK GUIDE

to understanding the world of cabinet locks

A LOCK IS A LOCK ... OR IS IT?

There are many different kinds of cabinet locks on the market today. Sometimes it's difficult to cut through all the locksmith jargon and understand what the real differences are. This brochure is intended as an educational tool for explaining these differences. Its purpose is to answer questions like: What's the difference between disc tumbler and pin tumbler? Why is a cam lock not always a good choice? What's the benefit of using large pin tumbler cabinet locks as opposed to small pin tumbler cabinet locks? Are the advantages of an interchangeable core system really worth the cost? Who cares anyway, are cabinet locks really that important?

Through this brochure, we hope that you will gain a better understanding of locks in general, cabinet locks specifically, and the cabinet lock solutions provided by Olympus Lock products.

WHAT'S THE DIFFERENCE BETWEEN DISC TUMBLER AND PIN TUMBLER?

Disc tumbler locks, sometimes referred to as "wafer locks," are inexpensive locks typically used when only a low level of security is required. Disc tumblers are not intended for high-use or high-security applications because they wear out quicker and are easier to pick than pin tumbler locks. In commercial applications where large numbers of locks will be installed within a facility, pin tumbler locks are typically used because they allow the complex master keying and sub-master keying required in larger institutional type settings such as schools, banks, and hospitals. Intricate keying needs cannot be handled by a disc tumbler system. In addition to master keying requirements, pin tumbler locks allow for many more key changes than disc tumblers, decreasing the likelihood that a key may operate other locks it was not intended to operate.

WHY IS A CAM LOCK NOT ALWAYS A GOOD CHOICE?

A cam lock is chosen many times because it is the least expensive and most versatile alternative available. Not surprisingly, you may see cam locks on much new construction work. But what's wrong with that? Simply put, cam locks do not stand up to heavy use or provide the same level of security as a lock dedicated specifically for a door or drawer application. Dedicated door and drawer locks have a heavy duty deadbolt to secure the cabinet—a cam lock's security is only as good as the screw which holds the cam in place. Many times, this screw becomes loose with age and the cam falls off. Therefore, the combination of a single screw holding the cam and the possibility that the screw will eventually come loose, makes for a lock that does not—in most instances—provide the type of security or durability necessary for commercial applications.

WHAT ARE THE BENEFITS OF USING LARGE PIN TUMBLER VS. SMALL PIN TUMBLER CABINET LOCKS?

Today's security professionals are working toward decreasing the complexity of the security systems they deal with. One way to do this is to decrease the number of keys needed for the system. Large pin tumbler cabinet locks allow for "one-key operation." Large pin tumbler cabinet locks accept "full-size" keys allowing the same key to operate the door for entry, cabinet locks, mailbox locks, and any other locks to which the individual has access. This substantially reduces requirements for tracking keys, codes, and locks. Large pin tumbler cabinet locks are more expensive than small pin tumbler, but the benefits they provide far outweigh the additional cost. Locksmiths, maintenance engineers, facilities managers, and security professionals prefer "one-key operation" whenever possible.

ARE THE ADVANTAGES OF AN INTER-CHANGEABLE CORE SYSTEM WORTH THE COST?

For all the previously mentioned options, if a new key is required to work a series of locks, substantial time is spent removing the locks and rekeying them. In some instances, the cabinet locks are so difficult to rekey, they are replaced and the old locks are scrapped. Costs like these can become significant over time. With an interchangeable core system, such a change is easy—simply insert the control key, remove the old core, and insert the new core. No costly downtime or disruptions are necessary. This is an extremely attractive option—especially in large systems where changing keys will be a common occurrence. Interchangeable core's easy maintenance makes it the most preferred option.

OLYMPUS CABINET LOCK GUIDE

ARE CABINET LOCKS REALLY THAT IMPORTANT?

When you think of the type of things that are secured by cabinet locks, you begin to understand why security is so important. For instance, cabinets secure drugs in hospitals and doctor's offices; cabinets secure cash in banks; cabinets secure important papers and supplies in schools. Do you really want to trust important items like these to a less secure locking device? If something is important enough to be locked up—why use a cheap alternative?

WHO IS OLYMPUS LOCK?

Olympus Lock is a manufacturer of high quality small and large pin tumbler and interchangeable core cabinet locks. If you need help choosing the right lock for the right application, Olympus Lock's customer service department would be happy to answer any questions you may have. Call us at 206-362-3290, 7:00 am to 4:00 pm (Pacific Time) for assistance.

OLYMPUS CABINET LOCKS

Small Pin — N Series (National Keyway)

Cam locks	DCN1, 2, 3, 4
Door lock	100DR
Drawer lock	200DW
Sliding door lock	300SD
Sliding door ratchet lock	329R
Drawer latch lock (field reversible)	998
Door latch lock (field reversible)	999
File cabinet lock	FC10
Drawer latch lock (heavy duty)	L20V
Diamond back lock	N078
T-bolt lock	T37

Small Pin — R Series (CCL Keyway)

Cam locks	DCR1, 2, 3, 4
Door lock	500DR
Drawer lock	600DW
Sliding door lock	400SD
Sliding door ratchet lock	429R
Drawer latch lock (field reversible)	996
Door latch lock (field reversible)	997
Diamond back lock	R078

Padlockable Cam Lock

Cam lock hasp	DCP
Cam lock hasp	DCP500

Standard Cylinder — Schlage "C" or Less Cylinder

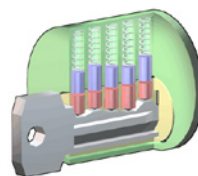
Door lock	700SC, 700LC
Drawer lock	800SC, 800LC
Cam Lock	820SC, 820LC
Sliding door ratchet lock	829R, 829R-LC
Deadlocking latch	850SC, 850LC
Spring latch	L78, L78LC

Standard Cylinder — Sargent Original Cylinders

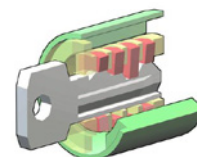
Door/drawer lock bodies	754LC, 854LC
-------------------------------	--------------

WHEN CHOOSING A CABINET LOCK...

1. Pin tumbler is better than disc tumbler
2. Dedicated door and drawer locks are better than cam locks
3. Large pin tumbler is better than small pin tumbler
4. Interchangeable core is better than standard core
5. If something is important enough to be locked up, don't use a cheap security device



Pin Tumbler



Disc Tumbler

Interchangeable Core — Small Format (Best style)

Cam lock	720LM/DM
Reversible door/drawer lock	721DR/721DW
Plunger lock	722S/722S-TBM
Sliding door cylinder housing	723S
Door/drawer deadbolt lock	725RD/725MD
Door/drawer latch lock	725RL/725ML
Mailbox lock	728MBL
Sliding door ratchet lock	729R
Deadlocking drawer latch	950IC
Drawer latch lock	L72V

Interchangeable Core — Schlage Full-Size

Door deadbolt lock	777ICP
Drawer deadbolt lock	888ICP
Cam Lock	920LM/DM
Sliding door ratchet lock	929R
Drawer latch lock	L92V

Interchangeable Core — Corbin/Russwin

Door/drawer deadbolt lock	CR1125RD
Door/drawer latch lock	CR1125RL

Interchangeable Core — Medeco/Yale

Door/drawer Lock	931DR/931DW
Cam lock (Medeco)	ME93
Cam lock (Yale)	YA93

Interchangeable Core — Sargent

Cam lock	SA54
----------------	------

Rim Cylinder — SLT Series Conversion Kit

Latch Lock	SLT-01
Deadbolt Lock	SLT-02

Phone: 206-362-3290
Fax: 206-362-3569
www.olympuslock.com



**OLYMPUS
LOCK**
Institutional grade cabinet locks.